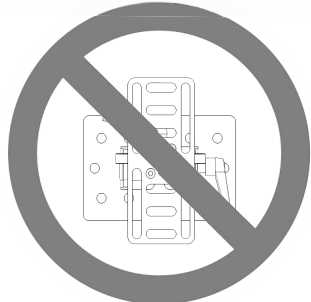
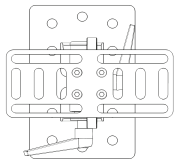


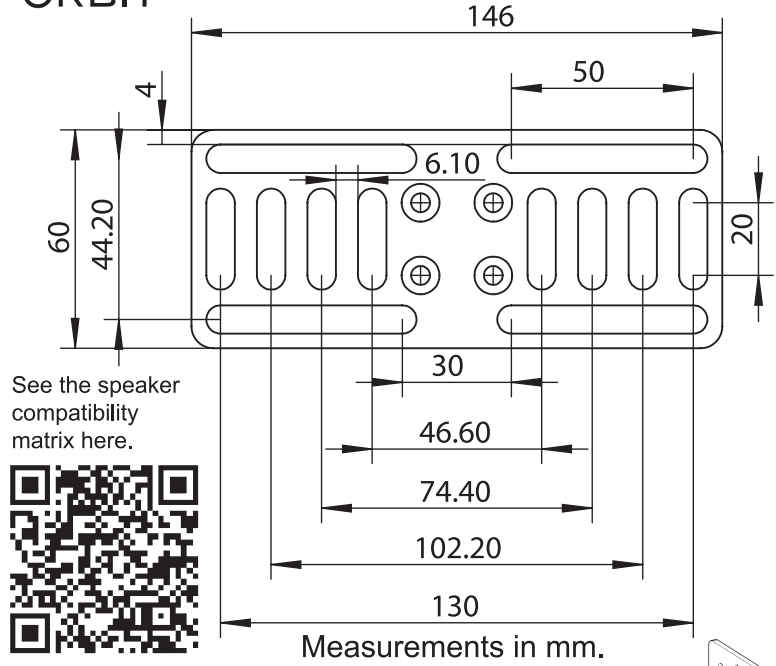
PRECISION[®]

TRIAD-ORBIT[®]

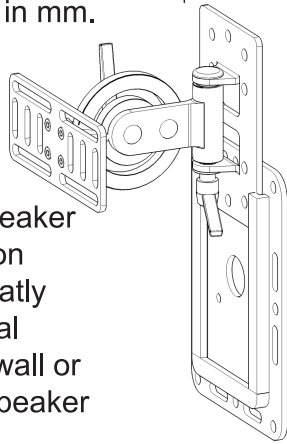
Find the best placement position on your speakers. Next, insert the supplied machine screws through the SM-UM1 faceplate and into the speakers mounting holes.



DO NOT mount the SM-UM1 horizontally. To mount your speaker(s) vertically or horizontally, use the four (4) faceplate machine screws to fasten the faceplate to the desired speaker position.

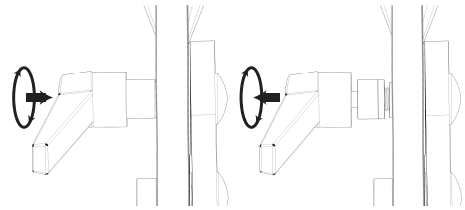


The SM-UM1 is a stand-alone, universal speaker mount. Incorporating the innovative Precision SW-WM1 Wall Mount with the SM-UM1 greatly simplifies the mounting process for individual installers. First, mount the SM-WM1 to the wall or ceiling, Next, slide the complete SM-UM1 speaker assembly into the SM-WM1.



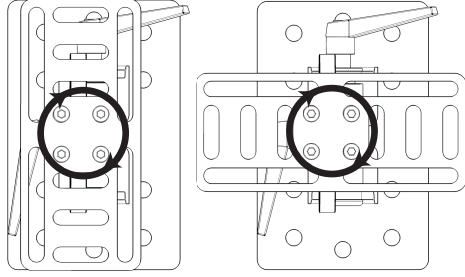
SM-UM1 Tensioning Knobs are spring-loaded.

ATTENTION: When the SM-UM1 Tilt and Pan Knobs reach a position where movement is impeded or presents a 'weak' hand position, simply pull the knob up from the center to re-position it. Release the knob and continue to tighten.



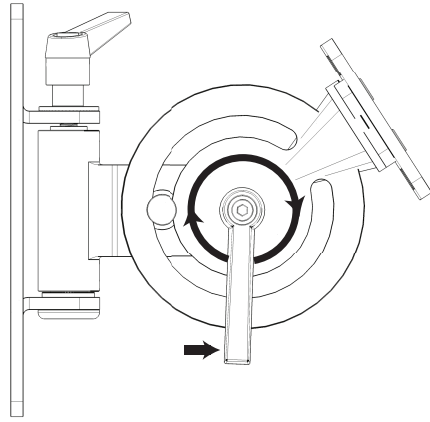
Vertical or Horizontal Speaker Orientation is secured with SM-UM1 faceplate.

DO NOT mount the SM-UM1 horizontally. To mount your speaker(s) vertically or horizontally, use the four (4) faceplate machine screws to fasten the faceplate to the desired speaker position.



SM-UM1 Speaker Mount tilt is controlled by the center spring knob.

The SM-UM1 Tilt is controlled by the center spring knob. ALWAYS SUPPORT THE WEIGHT OF THE SPEAKER WITH ONE HAND PRIOR TO LOOSENING. CONTINUE TO SUPPORT THE SPEAKER UNTIL IT IS IN THE DESIRED POSITION AND LOCKED SECURELY IN PLACE.



SM-UM1 Speaker Mount Pan is controlled by the lower spring knob.

The SM-UM1 pan is controlled by the lower spring knob. ALWAYS SUPPORT THE WEIGHT OF THE SPEAKER WITH ONE HAND PRIOR TO LOOSENING. CONTINUE TO SUPPORT THE SPEAKER UNTIL IT IS IN THE DESIRED POSITION AND APPLY EXTRA PRESSURE TO HOLD THE SPEAKER IN PLACE.

